

DATA SHEET



Three Phase Induction Motor - Squirrel Cage

| | | | | | | | | |
|--|---|-----------------------------|---------------------------------|---------|----------|------|------|------|
| Customer : | | | | | | | | |
| Product line | : W22 NEMA Premium Efficiency Three-Phase | Product code : | 11807248 | | | | | |
| | | Catalog # : | 02036ET3E256TF3-W22 | | | | | |
| Frame | : 256T | Locked rotor time | : 25s (cold) 14s (hot) | | | | | |
| Output | : 20 HP (15 kW) | Temperature rise | : 80 K | | | | | |
| Poles | : 2 | Duty cycle | : Cont.(S1) | | | | | |
| Frequency | : 60 Hz | Ambient temperature | : -20°C to +40°C | | | | | |
| Rated voltage | : 230/460 V | Altitude | : 1000 m.a.s.l. | | | | | |
| Rated current | : 46.5/23.3 A | Protection degree | : IP55 | | | | | |
| L. R. Amperes | : 284/142 A | Cooling method | : IC411 - TEFC | | | | | |
| LRC | : 6.1x(Code G) | Mounting | : F-3 | | | | | |
| No load current | : 13.0/6.50 A | Rotation ¹ | : Both (CW and CCW) | | | | | |
| Rated speed | : 3525 rpm | Noise level ² | : 72.0 dB(A) | | | | | |
| Slip | : 2.08 % | Starting method | : Direct On Line | | | | | |
| Rated torque | : 29.8 ft.lb | Approx. weight ³ | : 263 lb | | | | | |
| Locked rotor torque | : 200 % | | | | | | | |
| Breakdown torque | : 240 % | | | | | | | |
| Insulation class | : F | | | | | | | |
| Service factor | : 1.25 | | | | | | | |
| Moment of inertia (J) | : 1.54 sq.ft.lb | | | | | | | |
| Design | : B | | | | | | | |
| Output | 25% 50% 75% 100% | Foundation loads | | | | | | |
| Efficiency (%) | 90.5 90.2 90.7 90.6 91.0 90.9 91.0 91.2 90.2 89.5 90.4 89.8 91.2 91.1 91.2 91.2 86.9 88.9 87.2 89.2 87.5 89.5 87.5 89.5 89.0 89.2 89.5 89.5 | Max. traction | : 266 lb | | | | | |
| Power Factor | 0.56 0.54 0.80 0.78 0.87 0.86 0.89 0.89 0.50 0.48 0.75 0.73 0.84 0.83 0.88 0.87 0.64 0.60 0.85 0.82 0.89 0.88 0.90 0.89 0.57 0.80 0.87 0.89 | Max. compression | : 529 lb | | | | | |
| Losses at normative operating points (speed;torque), in percentage of rated output power | | | | | | | | |
| Losses (%) | P1 (0,9;1,0) | 9.0 | 8.8 | 8.8 | 8.8 | 13.0 | 10.7 | 10.7 |
| | P2 (0,5;1,0) | 6.6 | 6.5 | 6.5 | 6.5 | 9.6 | 7.9 | 7.9 |
| | P3 (0,25;1,0) | 6.2 | 6.0 | 6.0 | 6.0 | 8.9 | 7.3 | 7.3 |
| | P4 (0,9;0,5) | 4.9 | 4.8 | 4.8 | 4.8 | 7.1 | 5.8 | 5.8 |
| | P5 (0,5;0,5) | 2.7 | 2.6 | 2.6 | 2.6 | 3.9 | 3.2 | 3.2 |
| | P6 (0,5;0,25) | 1.8 | 1.7 | 1.7 | 1.7 | 2.6 | 2.1 | 2.1 |
| | P7 (0,25;0,25) | 1.0 | 1.0 | 1.0 | 1.0 | 1.5 | 1.2 | 1.2 |
| Bearing type | : | <u>Drive end</u> 6309 C3 | <u>Non drive end</u> 6209 C3 | | | | | |
| Sealing | : | V'Ring | V'Ring | | | | | |
| Lubrication interval | : | 19000 h | 20000 h | | | | | |
| Lubricant amount | : | 13 g | 9 g | | | | | |
| Lubricant type | : | Mobil Polyrex EM | | | | | | |
| Rev. | Changes Summary | | Performed | Checked | Date | | | |
| Performed by | | | | | | | | |
| Checked by | | | | Page | Revision | | | |
| Date | 25/02/2025 | | | 1 / 2 | | | | |

DATA SHEET

Three Phase Induction Motor - Squirrel Cage



Customer : _____

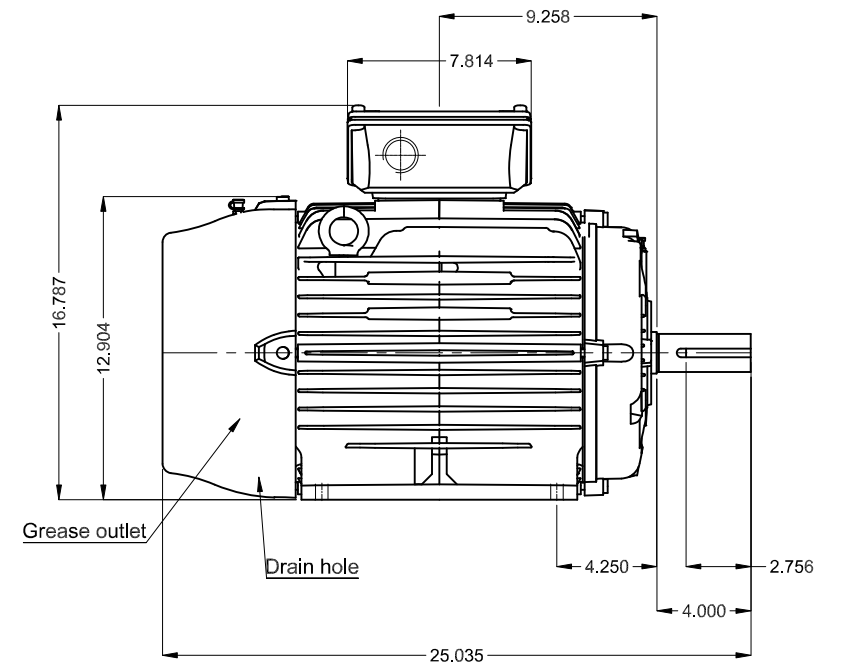
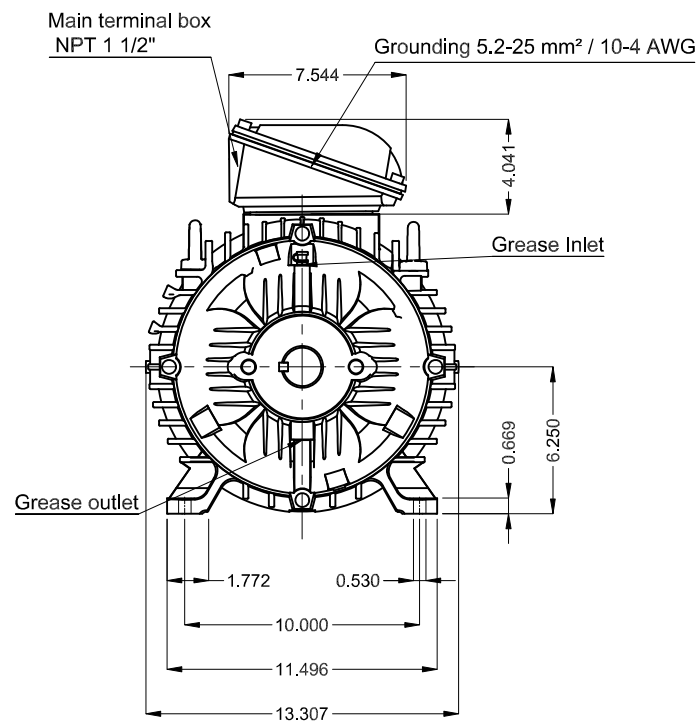
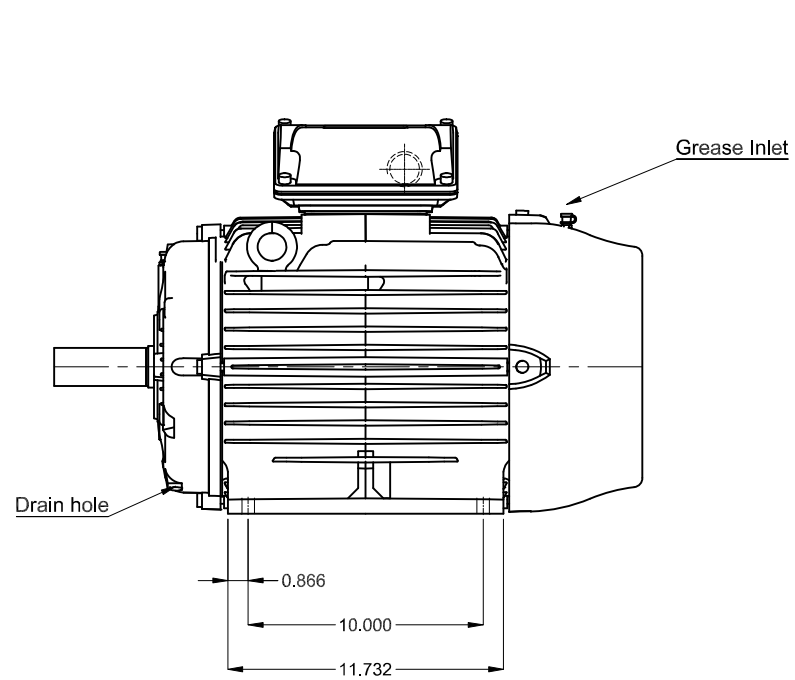
Notes

This revision replaces and cancel the previous one, which must be eliminated.

- (1) Looking the motor from the shaft end.
- (2) Measured at 1m and with tolerance of +3dB(A).
- (3) Approximate weight subject to changes after manufacturing process.
- (4) At 100% of full load.

These are average values based on tests with sinusoidal power supply, subject to the tolerances stipulated in NEMA MG-1.

| Rev. | Changes Summary | Performed | Checked | Date |
|--------------|-----------------|-----------|---------|----------|
| | | | | |
| Performed by | | | | |
| Checked by | | | Page | Revision |
| Date | 25/02/2025 | | 2 / 2 | |



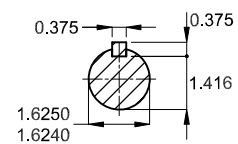
C

D

E

Without vertical jackscrews
 Color RAL 5009
 Painting plan 203A
 Mounting B3T

DE Shaft End



20 HP 02 Poles 60 Hz A

Scale 1 : 8

| | | | | | | | | |
|-----------|------------|---|------------|---------|----------|------|-----|----|
| ECM | LOC | THREE PH. MOTOR W22 NEMA PREM. EFF. FRAME 256T IP55 TEFC | HYBRISUSER | | | | | 00 |
| EXECUTED | HYBRISUSER | | EXECUTED | CHECKED | RELEASED | DATE | VER | |
| CHECKED | | | | | | | | |
| RELEASED | | | | | | | | |
| REL. DATE | | | | | | | | |

PREVIEW

WDD 00

SHEET 1 / 1

